

Type 01120

Type 011320

Type 011520

Armaturen für Schiffbau und Industrie
Valves for shipbuilding and industry



Fernbetätigte Schnellschlussventile, PN 16
in Durchgangsform; federbelastet
aus Sphäroguss GGG40.3
Innenteile Nirostahl
Baulänge nach DIN 3202/EN 558 F1
Flansche nach DIN PN 10/16
Zul. Betriebstemperatur bis + 140° C
Type 01120: mit Handhebel für Seilzugbetätigung
Type 011320: zusätzlich mit Pneumatikzylinder
Type 011520: zusätzlich mit Hydraulikzylinder

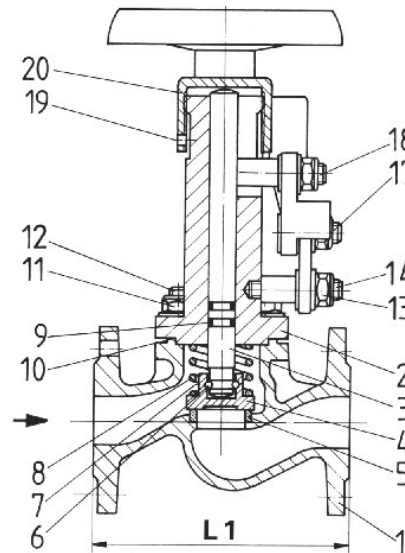
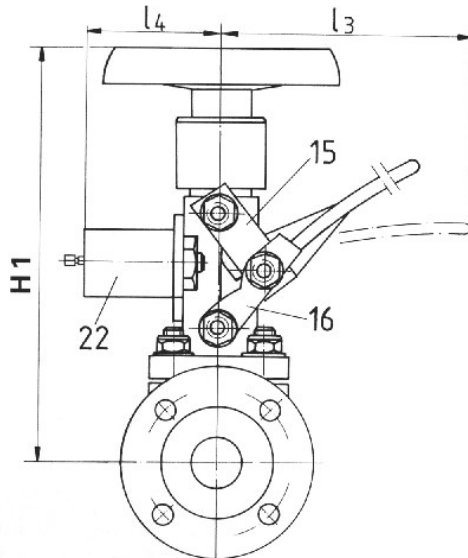
remote controlled quick-closing valves, PN 16
straight type; spring loaded
nodular iron GGG40.3
inner parts stainless steel
face to face acc. to DIN 3202/EN 558 F1
flanges acc. to DIN PN 10/16
max. operating temperature up to + 140° C
type 01120: with lever for wire operation
type 011320: in addition with pneumatic cylinder
type 011520: in addition with hydraulic cylinder

Materialspezifikation:

| | | |
|-----------|-----------|--------|
| Gehäuse: | GGG40.3 | 0.7043 |
| Oberteil: | GGG40.3 | 0.7043 |
| Sitz: | Nirostahl | 1.4021 |
| Kegel: | Nirostahl | 1.4021 |
| Spindel: | Nirostahl | 1.4021 |

material specification:

| | | |
|---------|-----------------|--------|
| body: | GGG40.3 | 0.7043 |
| bonnet: | GGG40.3 | 0.7043 |
| seat: | stainless steel | 1.4021 |
| disc: | stainless steel | 1.4021 |
| stem: | stainless steel | 1.4021 |



Type 01120: mit Handhebel / with lever
Type 011320: mit Pneumatikzylinder / with pneumatic cylinder
Type 011520: mit Hydraulikzylinder / with hydraulic cylinder

Ausserdem erhältlich: Ventile aus Stahlguss GSC-25; Druckstufe PN 40
Also available: valves in cast steel GSC-25; pressure rating PN 40

| NW/DN | L1 | H1 | D | PCD | Holes | I3 | I4 | KG |
|-------|-----|-----|-----|-----|---------|-----|-----|-----|
| 15 | 130 | 250 | 95 | 65 | 4 x 14 | 140 | 100 | 4,3 |
| 20 | 150 | 250 | 105 | 75 | 4 x 14 | 140 | 100 | 5,0 |
| 25 | 160 | 250 | 115 | 85 | 4 x 14 | 140 | 100 | 6,0 |
| 32 | 180 | 260 | 140 | 100 | 4 x 18 | 140 | 100 | 7,0 |
| 40 | 200 | 270 | 150 | 110 | 4 x 18 | 140 | 100 | 10 |
| 50 | 230 | 275 | 165 | 125 | 4 x 18 | 140 | 100 | 12 |
| 65 | 290 | 340 | 185 | 145 | 4 x 18 | 170 | 110 | 16 |
| 80 | 310 | 350 | 200 | 160 | 8 x 18 | 170 | 110 | 22 |
| 100 | 350 | 370 | 220 | 180 | 8 x 18 | 240 | 110 | 34 |
| 125 | 400 | 420 | 250 | 210 | 8 x 18 | 240 | 110 | 52 |
| 150 | 480 | 430 | 285 | 240 | 8 x 22 | 240 | 110 | 65 |
| 200 | 600 | 505 | 340 | 295 | 8 x 22 | 270 | 130 | 120 |
| 250 | 730 | 575 | 395 | 350 | 12 x 22 | 270 | 130 | 210 |